



Shandong Qiyun Group Co., Ltd.



### Shandong Qiyun Group Co., Ltd.

Please contact our company's sales department for specific equipment configuration and parameters.  
Parameter modification will not be notified separately.

+86 531 86943227    +86 18560222404

info@qiyunlift.com    <https://twitter.com/qiyunlift>    [www.qiyunlift.com](http://www.qiyunlift.com)

<https://qiyunlift.en.made-in-china.com>    <https://qiyunlift.en.alibaba.com>

South area of Lifting Platform Industrial Park, Huihe Town, Jiyang, Jinan, Shandong, China.

High end household villa elevator manufacturer

## COMPANY PROFILE

Shandong Qiyun Group Co., Ltd. is located in the provincial-level key economic development zone-Jibei Development Zone, Jinan City, Shandong Province, adjacent to the Yellow River that nurtures the Chinese nation. It is a company specializing in the manufacture, research and development, marketing, installation, maintenance of home lifting platforms for villas. It is a professional household lifting platform operating company that keeps in one. The company mainly produces hydraulic home lifting platform, traction elevator, sightseeing home lifting platform and other products, and its products cover the whole country. Since its establishment, the company has always taken safety and comfort as its own responsibility, and is committed to providing customers with safer, more efficient and more advanced villa home lifting platform products.

The company's advanced production technology builds a first-class manufacturing site for products. The company's villa home lifting platform covers two types of hydraulic and traction, which can meet the different needs of different customers to the greatest extent. At the same time, the company strictly implements the ISO9001 quality management system, continuously improves the company's independent research and development capabilities, and provides a strong guarantee for achieving its own high-quality growth.

Shandong Qiyun Group Co., Ltd. always adheres to the "people-oriented" production philosophy, pursues reflecting the individual needs of customers, and perseveres in providing customers with better products and services.



## INTELLIGENT HYDRAULIC HOME LIFTING PLATFORM

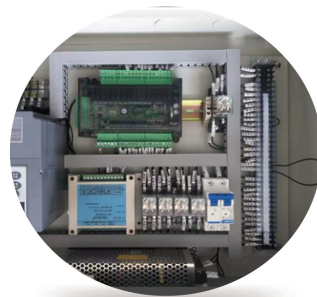
Multiple safety mechanisms/Provides strong backing



This product adopts hydraulic pump station and cylinder drive mode, adds silent joint venture hydraulic pump station, light curtain protection, landing door strong magnetic lock protection, and uses a special T-shaped track, which truly realizes smooth operation, no frustration in lifting, and a comfortable ride powerful.

### PROTECTIVE DEVICE · ELIMINATE HIDDEN SAFETY HAZARDS

1. Leveling protection
2. Rush protection
3. Light curtain protection
4. Safety edges for door
5. Oil circuit protection
6. Safety rope protection
7. Strong magnetic lock protection
8. UPS emergency drop



## CUSTOMIZE YOUR EXCLUSIVE HOME LIFTING PLATFORM

Comfort experience allows you to enjoy home life to the fullest

### A VARIETY OF WAYS TO OPEN THE DOOR, CHOOSE DIFFERENT TASTES OF LIFE

The villa series home lifting platform adopts a variety of door opening methods for users to choose, and can be specially designed according to user requirements and usage conditions.



Center opening door



Side opening door



Hand pulling door



Folding door



### BOTTOM ANTI-COLLISION · GUARD THE SAFETY OF FAMILY

The bottom chassis of the home lift platform is designed as a safe edge, and the lifting will stop immediately when it encounters an obstacle.



#### Most advanced door-motor system

The advanced VVF variable frequency door motor system is adopted to ensure that the door opening and closing speed can be adjusted freely, so that the entire system is robust and feasible, and the operation is balanced.



#### Automatic release device for accidental power failure

In order to prevent accidental power failure and shutting down people, the elevator can use ARD emergency leveling power supply to ensure that after the sudden power failure of the mains, there is enough power for the household lifting platform to safely send passengers to the nearest landing.



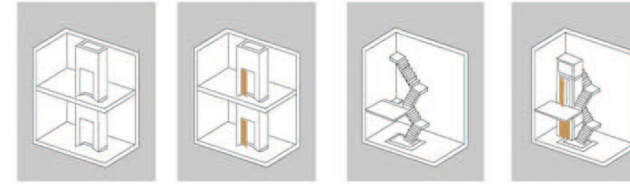
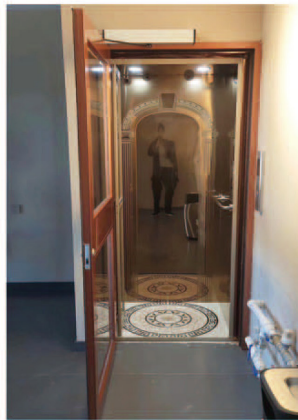
#### Automatic lighting system

##### To avoid energy consumption when no one uses the household lifting platform

The series villa household lifting platform is equipped with automatic lighting function. When no one is in use, the lighting in the car will automatically go out, and will automatically turn on after receiving any call instruction, which fully saves power consumption and effectively reduces your living cost.



## CAR MODELS



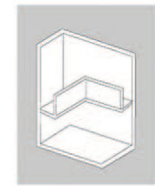
① The building has a special lifting platform shaft

The household lifting platform can be installed directly in the special shaft

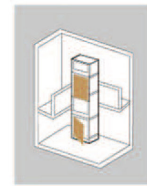
② There is a suitable space in the middle of the surrounding stairs

Install a shaft in the middle to install a household lifting platform

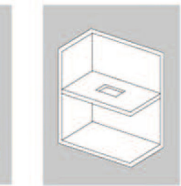
①②③④⑤ If the shaft used by the household lifting platform needs to be installed, the customer can also use metal frame or concrete to build the shaft in advance.



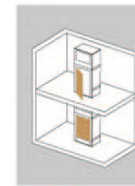
③ Have a hollow hall or room



Install a shaft in the hall or room to install a household lifting platform



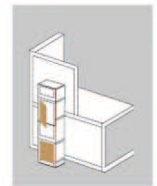
④ There is no suitable space in the building, so the home lift can only be installed indoors



Make a suitable hole in the floor and install a shaft to install a household lifting platform



⑤ There is no suitable space in the building



If allowed, install the domestic lifting platform in the outdoor shaft.

### I. The principle of home lifting platform

When home lifting platform goes up, provide needed power pressure difference for home lifting platform by hydraulic pump station, the flow of hydraulic oil is controlled by the valve group on the hydraulic pump station, the hydraulic oil pushes the piston of the hydraulic cylinder, So as to realize the upward movement of the home lifting platform; When the home lifting platform goes down, open valve group, use cabin self-weight(User' s weight) to cause pressure difference, make hydraulic oil return to the hydraulic oil tank, to realize the downward movement of the home lifting platform(Valve control speed).

### II. The feature of home lifting platform

1. Construction: will be installed without shaft and pit, shaft' s utilization rate is high;
2. Technical performance: good safety, high reliability, strong stability, relatively fast. Strong load-bearing, low noise(Adopt silent pump station, the noise is only 30 decibels).

### III. Use and maintenance

1. Low failure rate: for direct acting home lifting platform, simple structure, low failure rate;
2. Easy to rescue: when home lifting platform goes down, bring pressure driving by self-weight. Standard configuration UPS uninterrupted power supply, still issue a downward command for control system when power failure. Home lifting platform slowly descend to the bottom;
3. Simple maintenance: low follow-up maintenance cost, replace hydraulic oil every 1-2 years according to usage frequency. Other maintenance steps are simple and easy to operate.

### IV. Application occasions of home lifting platform

1. Attic, villa, civil housing, low and middle level residential and so on;
2. Garage, car elevator in parking lot;
3. Old house renovation project that needs to add a home lifting platform. Because the reconstruction of the old house is restricted by the civil structure, home lifting platform is good choice.
4. Mall, restaurant, luxury building, the above buildings usually adopt sightseeing type home lifting platform, many sightseeing home lifting platforms are driven by hydraulic straight top

### SWING DOOR SERIES WITH SHAFT



### MIDDLE POINT DOOR SERIES WITH SHAFT



# FUNCTION TABLE OF INTELLIGENT HYDRAULIC LIFTING PLATFORM WITHOUT SHAFT

## Control function

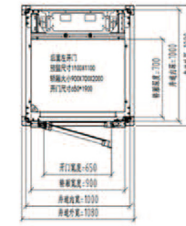
- Motor overheat protection
- Inverter overheat protection
- Leakage protection
- Process Protection
- Oil circuit fault protection
- Door blocked protection
- Access control light curtain protection
- Safety loop protection
- Layers change docking function
- Emergency descent after power failure

## Information function

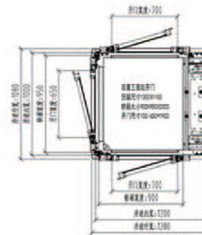
- Access to cabin
- Open button
- Light curtain protection
- Lighting in cabin
- The top decoration of the cabin
- Optional floor docking function
- Run direction display
- Cabin location display
- Internal call login display
- Floor display

## Base specification

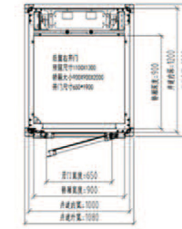
Load capacity	300-1000kg	Floor number	2-6
Speed	0.1-0.15M/S	Door opening mode	Manual/Electric
Voltage	220V/380V	Door opening direction	Side open/Middle point open
Cabin size: CW*CD*CH	According to filed size	Side open/Middle point open doorsize: DW*DH	Can be customized



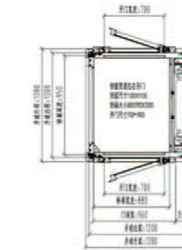
标准侧开门  
标准轿厢尺寸1100mm\*1100mm  
尺寸900mm\*700mm, 净空门高500mm  
适用于三扇侧开门和两扇侧开门, 楼梯, 跃层等



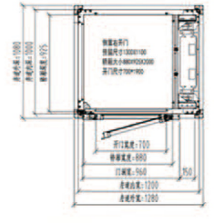
三方向开门门框 (限260kg)  
适用于三扇侧开门和两扇侧开门, 楼梯, 跃层等



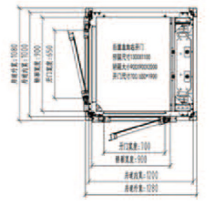
标准后开门机260kg/3人  
标准轿厢尺寸1300mm\*1300mm  
尺寸900mm\*900mm, 净空门高500mm  
适用于三扇侧开门和两扇侧开门, 楼梯, 跃层等



对向侧开门门框 (限260kg)  
适用于三扇侧开门和两扇侧开门, 楼梯, 跃层等



标准侧开门机260kg/3人  
标准轿厢尺寸1300mm\*1300mm  
尺寸880mm\*925mm, 净空门高700mm  
适用于三扇侧开门和两扇侧开门, 楼梯, 跃层等



五扇侧开门门框 (限260kg)  
适用于三扇侧开门和两扇侧开门, 楼梯, 跃层等

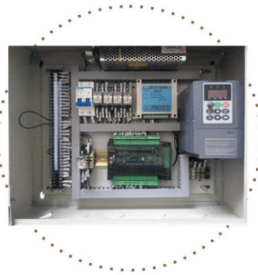
## Product instructio

<b>Roof height</b> Min. Height 2200mm Max. Height 3000mm	Home lifting platform Used for private home			Home lifting platform Running control Linkage running push button and then start to run	<b>Floor number</b> 2-4 layers
<b>Installation</b> The reserved pit requires the ground to be 50mm below the surface	Indoor installation environment	Max. Running speed 0.15m/s (National industrial standard)	Drive system Nut and screw drive Rated power: 1.5Kw	warranty	Technical standard
Can be customized		<b>Lifting height</b> 250-12000mm	Provide warranty 1 year	Manufacturing passed certification by GB/T190012016/ISO9001:2015	Emergency stop: Backup power supply
Control voltage 24V					

## INTELLIGENT HYDRAULIC HOME LIFTING PLATFORM

### Multiple security mechanism

This product adopts hydraulic pump station and cylinder drive mode, adds silent joint venture hydraulic pump station, light curtain protection, landing door strong magnetic lock protection, and adopts special T-shaped track, which truly realizes smooth operation, no frustration in lifting, and comfortable ride powerful.



### PROTECTION DEVICE ELIMINATE SAFETY HAZARDS

- 1.Leveling protection
- 2.Rush protection
- 3.Light curtain protection
- 4.Safety touch panel
- 5.Oil circuit protection
- 6.Safety rope protection
- 7.Strong magnetic protection
- 8.UPS emergency descent

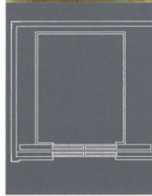


### ALTERNATIVE DOOR STYLES, DIFFERENT CHOICE

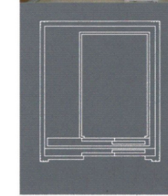
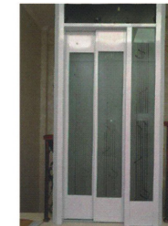
Villa series home lifting platform adopts a variety of open-door modes for users to choose, and can be specially designed according to users requirements and use conditions.

### BOTTOM ANTI-COLLISION GUARD FAMILY SAFETY

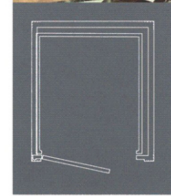
All chassis of household lifting platform is designed to be all-Safe edges, and the lifting will stop as soon as obstacles are encountered.



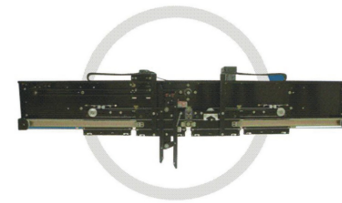
Center-opening



Side-opening

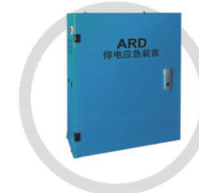


Manually operated door



### The Top Grade Door Machine System

Adopts the advanced VVVF variable frequency door machine system to ensure free adjustment of door open/shut speed, therefore the whole system is firmly workable with the smooth travel



### Emergency Auto Landing System

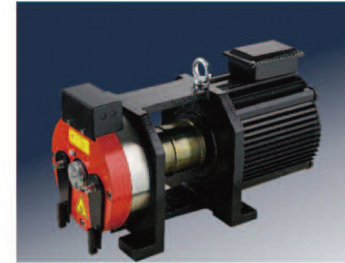
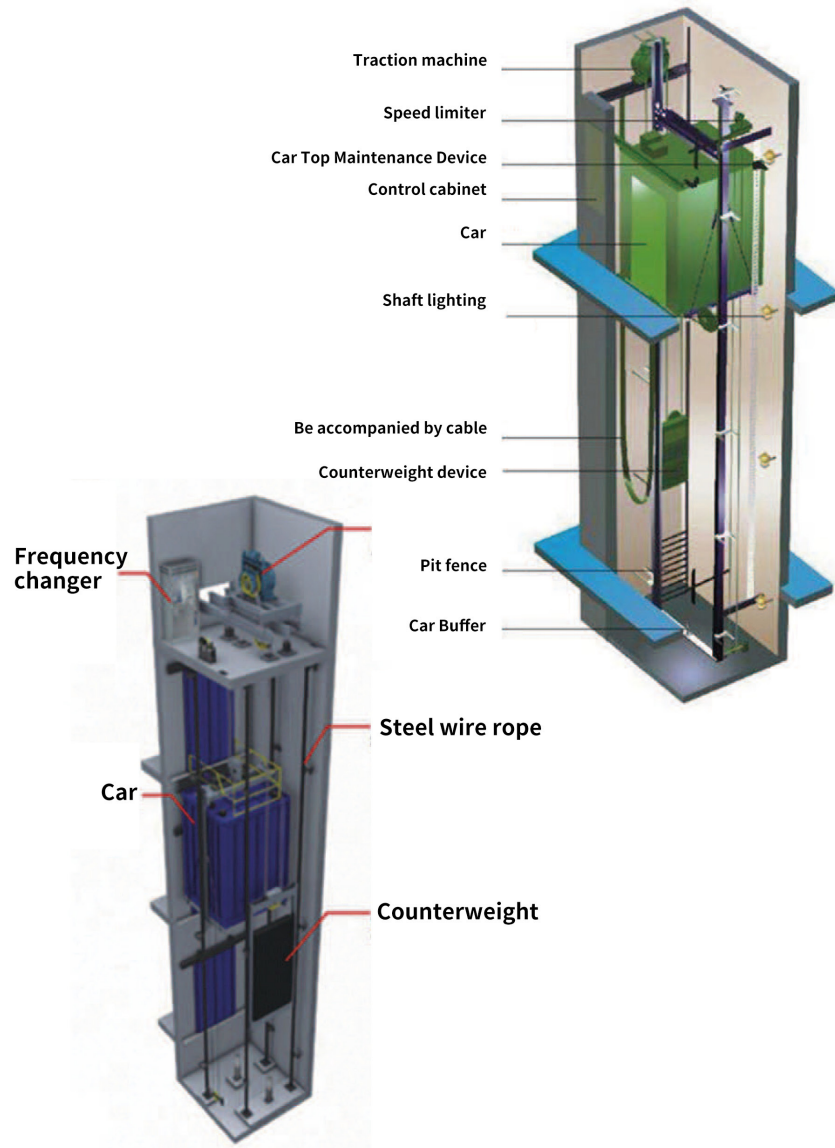
In order to prevent accidental power outage, the elevator can use ARD emergency level power supply to ensure that after the sudden power outage, the home lifting platform can still have enough power to safely transport passengers to the nearest level station.



### Automatic Lighting System to avoid energy consumption when nobody uses home lifting platform

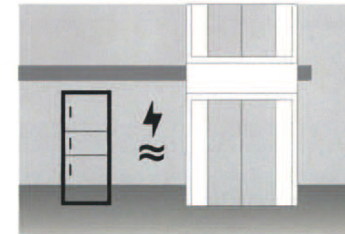
Villas Series home lifting platform equipped with automatic lighting function, when no one is using, the lighting in the car automatically extinguishes, aromatically opens after receiving any call instructions, fully saving energy consumption, in order to effectively reduce your living costs.

## TRACTION ELEVATOR



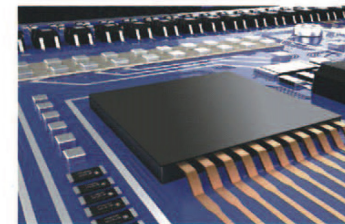
### Permanent magnet synchronous steel belt traction machine

Adopt mature permanent magnet synchronous steel belt traction machine, which improves building utilization rate and enhances elevator's driving performance so as for your comfortable villa life.



### 220V energy-saving new home appliance

220V conventional voltage, 1.1KW ultra low energy consumption, safe and energy-saving "new home appliance" exclusively for you



### Full-computer intelligent control system

Multi-microcomputer , modularized and networked control system along with high-efficiency data processing drives elevator operation system more stable, accurate and reliable.



### The three major advantages

Polyurethane material layer, no need of lubrication  
The service life is 2-3 times of the traditional steel wire rope  
Easy to bend, increase the contact area with the drive wheel, more energy saving, more efficient

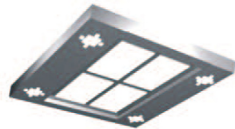
### OPTIONAL FOR CABIN ROOF



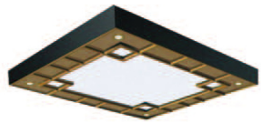
Multi-layer transparent plate, acrylic decoration



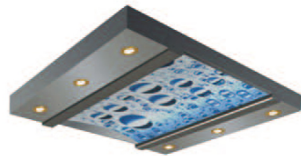
Hairlines stainless steel frame



Acrylic lighting board (trellis)



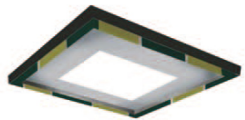
Copper lamp. Acrylic decoration in the middle



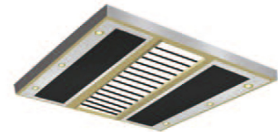
Map custom Downlight



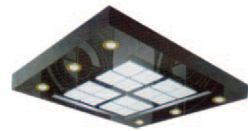
Field grid design Supports customization



Mirror stainless steel frame



Partition Design Custom design



Hollow milky white acrylic column



Double arched white organic light-transmitting plate

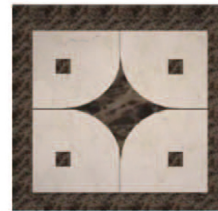
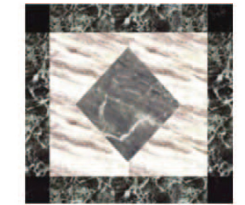
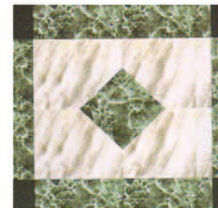
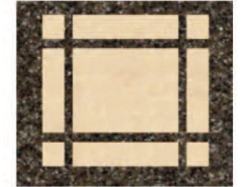
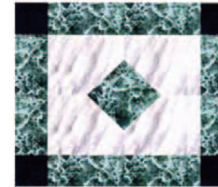


Hairlines stainless steel frame



White transparent plate

### MATCHING THE BOTTOM OF THE CABIN



Customize patterns as you like

### LANDING DOOR SERIES



QZ-LD01  
Optional



QZ-LD02  
Optional



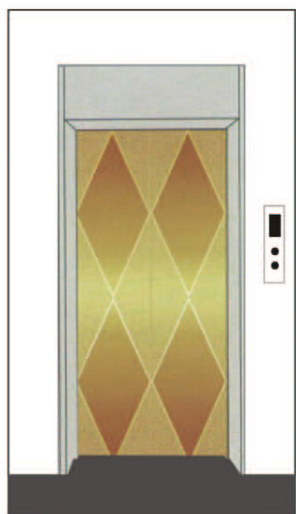
QZ-LD03  
Optional



QZ-LD06  
Optional



QZ-LD07  
Optional



QZ-LD08  
Optional

### HUMAN MACHINE INTERFACE



### BUTTON/OPTIONAL



## CUSTOMIZABLE CABIN



### XBS-D01

Modern style  
Ceiling: mirror stainless steel,  
LED downlight  
Car wall: hairline-finished  
stainless steel  
Floor: PVC



### XBS-D02

Modern style  
Condole top: Mirror stainless steel,  
LED downlight  
Car wall: hairline-finished  
stainless steel, glass  
Floor: PVC  
Handrail (optional):  
hairline-finished stainless steel  
round tube



### XBS-D03

Modern style  
Ceiling: mirror stainless steel,  
LED downlight  
Car wall: hair line stainless  
steel, back wall glass, aluminum  
handrail  
Floor: PVC  
Handrail (optional):  
hairline-finished stainless steel  
round tube



### XBS-D04

Modern style  
Ceiling: mirror stainless steel  
hollow, acrylic transparent  
plate  
Car wall: hairline-finished  
stainless steel, mirror stainless  
steel  
Floor: PVC



### XBS-D05

Modern style  
Ceiling: mirror stainless steel,  
LED downlight  
Car wall: hairline-finished  
stainless steel, wood grain  
stainless steel  
Floor: PVC



### XBS-D06

Modern style  
Ceiling: mirror stainless steel,  
acrylic lighting, LED  
Car wall: mirror stainless steel  
etched, wood grain steel  
Floor: PVC  
Handrail (optional) : acrylic  
imitation jade round tube



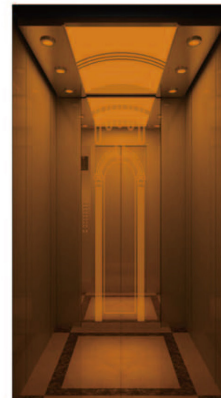
### XBS-D07

Modern style  
Ceiling: mirror stainless steel,  
LED downlight  
Car wall: hairline-finished  
stainless steel  
Floor: PVC  
Handrail (optional): acrylic  
imitation jade round tube



### XBS-D08

Modern style  
Ceiling: mirror stainless pot, LED  
downlight  
Car wall: hairline-finished  
stainless steel, glass  
Floor: PVC  
Handrail (optional):  
hairline-finished stainless steel  
tube



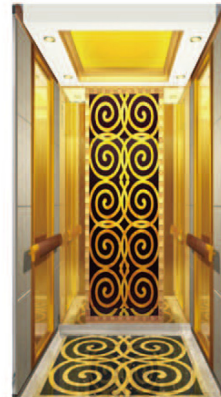
### XBS-D09

Modern style  
Ceiling: mirror stainless steel,  
LED downlight  
Car wall: hairline-finished  
stainless steel  
Floor: PVC



### XBS-D10

Modern style  
Ceiling: mirror stainless steel,  
LED downlight  
Car wall: hairline-finished  
stainless steel, glass  
Handrail (optional):  
hairline-finished stainless steel  
round tube



### XBS-D11

Modern style  
Ceiling: mirror stainless steel,  
LED downlight  
Car wall: hairline-finished  
stainless steel  
Floor: PVC  
Handrail (optional): acrylic  
imitation jade round tube



### XBS-D012

Modern style  
Ceiling: mirror stainless steel,  
LED downlight  
Car wall: hairline-finished  
stainless steel, glass  
Floor: PVC  
Handrail (optional):  
hairline-finished stainless steel  
round tube

## INTELLECTUAL CONTROL SYSTEM

It adopts a computer-integrated intelligent control system, a highly integrated, intelligent computer-controlled control system, which ensures that the home lifting platform has faster data processing and more complete functions.

### MINI INTEGRATED CABINET (OPTIONAL)

#### 1. Delicate integration

It has an integrated design and deep integration. The volume of the control cabinet is only 30% of the volume of the traditional control cabinet: the shape is exquisite and exquisite, the installation is eclectic, and it is naturally integrated with the architecture and home decoration style.

#### 2. Quiet and direct

No contactor application, no fan design, control cabinet volume is less than 40 decibels,

#### 3. Comfortable experience

With a high-performance drive platform and innovative algorithms, it completely solves the problem of elevator startup and running comfort.

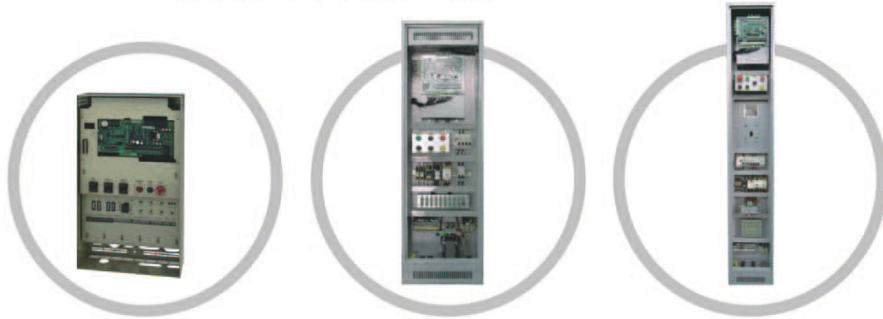
#### 4. Safe and secure

Small, Silence, Save, Safe, Smart;

Obtained TUV, Sil3 safety level international certification;

Original "5S" design concept: Small, Silence, Save, Safe, Smart;

It has multiple security guarantees such as intelligent automatic rescue, automatic rescue after power failure, and one-key rescue.

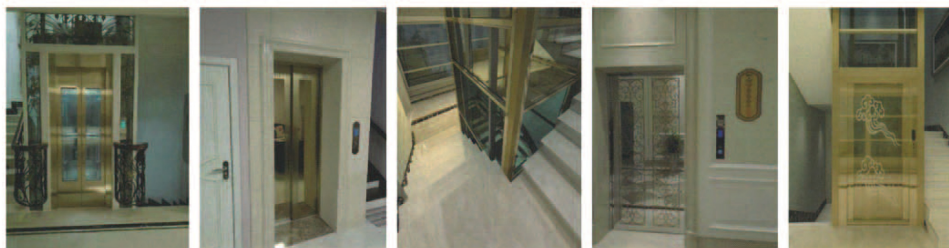
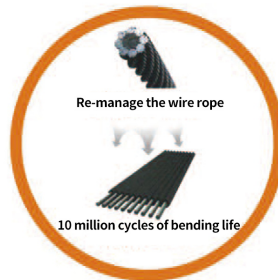


## STEEL BELT VILLA ELEVATOR

### Product features and advantages:

1. Permanent magnet synchronous steel belt host, no need to refuel, maintenance-free, more environmentally friendly, and more cost-effective;
2. The composite steel belt has flexible transmission, low noise, and the steel wire is coated with special materials to protect the steel wire from being corroded. It solves the risk of the steel wire fragile breaking in the past, is more durable, safer and has a longer service life;
3. Protect the steel wire from being fully rusted
4. Reduce friction and groove noise between metal wheels
5. No wear to the metal traction wheel
6. No need to use lubricating oil
7. Good flexibility, improve service life

Sectional Drawing of the steel belt



## Compact frame integrated villa elevator

1. It can bring its own panoramic sightseeing integration to strengthen the elevator frame shaft, which is safe and beautiful, does not need to be another civil shaft, and has a small area.
2. Lower requirements on the top floor and pit, and obvious advantages in space utilization.
3. It adopts the optimized structure of the new backpack frame, which is safe and reliable, and solves the defects of unilateral force on the backpack elevator car, easy deformation of the guide wheel, easy break of the guide wheel bearing, large noise, poor comfort, and hidden safety hazards.
4. Install the automatic release device for accidental power failure, which will not shut down people, ensuring that the elevator still has enough power to transport passengers to the nearest floor in the event of a sudden power failure.
5. It can be customized to add a wireless external communication device, just press a button in the car, and you can get in touch with your family and elevator managers.
6. The door can be opened manually, the failure rate is less, and the maintenance cost is lower.
7. Using German composite steel belt, after the dry million times bending tensile testing, flexible drive, smooth operation
8. The use of permanent magnet synchronous gearless machine, no oil changes, maintenance-free, green environmental protection, post-maintenance and low cost .
9. Using the world's first-class brand steel belt host bearing, block brake, good concentricity and higher safety.
10. The radiation generated by the operation of the elevator will not affect the health of the family and the normal use of equipment such as home appliances and mobile phones. The anti-interference is extremely strong, and any household equipment will not hinder the safe operation of the elevator.

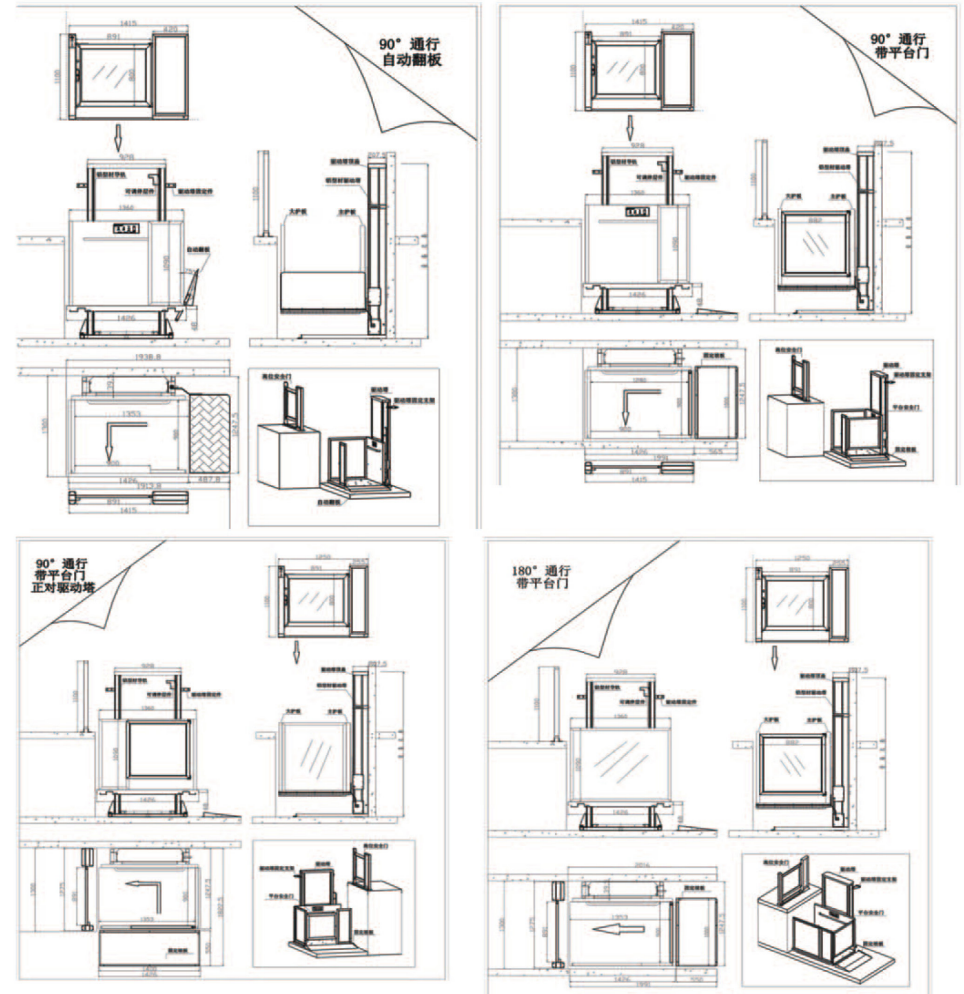
## Compact frame - stereo villa elevator classic case



# BARRIER-FREE LIFTING PLATFORM INSTALLATION SITE REAL SHOT



# SCHEMATIC DIAGRAM OF INSTALLATION CIVIL WORKS






# DR. EISSING & SOHN

HANDEL & SPEDITION KG

 +49 160 636 2588

 Erdbeerfeld 20, 26899 Rhede (EMS)

 [www.eissing-sohn.de](http://www.eissing-sohn.de)

 [info@eissing-sohn.de](mailto:info@eissing-sohn.de)

Für Anfragen zu Angeboten, Preisen und allen weiteren Anliegen:

 [simon\\_uwe@eissing-sohn.de](mailto:simon_uwe@eissing-sohn.de)

