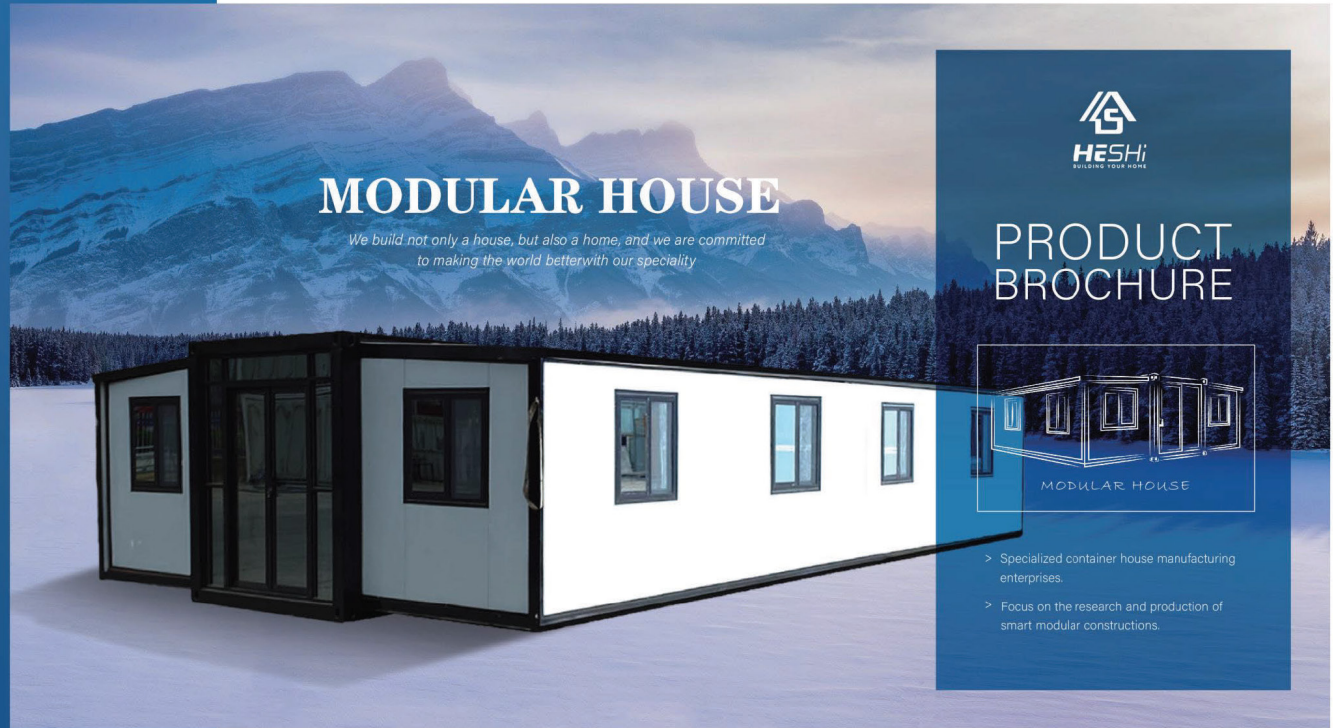


MODULAR HOUSE

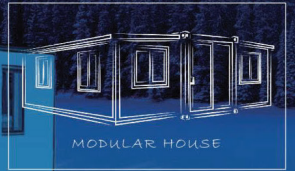


MODULAR HOUSE

We build not only a house, but also a home, and we are committed to making the world better with our speciality



PRODUCT BROCHURE



MODULAR HOUSE

- > Specialized container house manufacturing enterprises.
- > Focus on the research and production of smart modular constructions.

We don't just build houses; we create homes. With our expertise, we strive to make the world a better place.

As a leading manufacturer, we turn expandable container houses into real homes — serving more people and benefiting society

With care and dedication, we build safer, more comfortable living spaces for everyone..



01
Contents

(1-2)

02
About us

(5-6)

03
Product list

(7-20)

CONTENTS

04
Our products

(21-58)

05
Factory display

(59-60)

certification



15+ Years Experience
26000+ Buildings

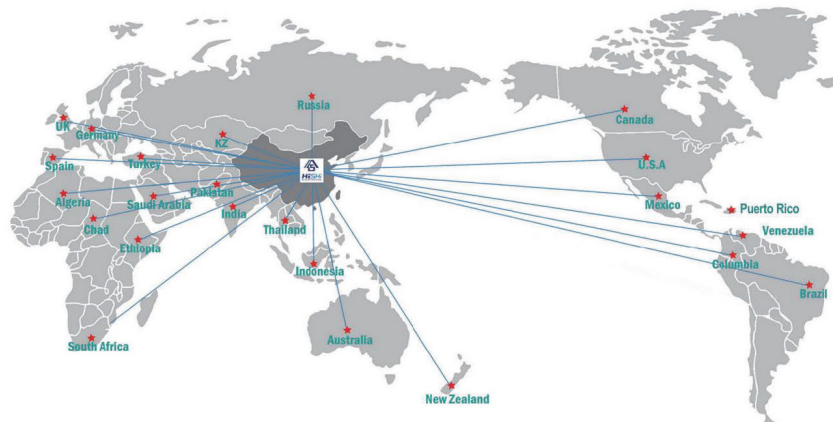
100+
Rich prodction
experience

30000m²
Huge production
workshop

300+
Professional
staff



Exported to the world



Currently, Heshi House exports its products to many countries around the world, including the United States, Europe, Australia, the Middle East, Southeast Asia, South Asia, Central Asia, Africa, and Latin America.

Quality certification

Adhering to the business philosophy of green construction, energy conservation and environmental protection, the company focuses on providing comprehensive housing solutions for builders, design institutes, developers and building material traders. Most of the materials used in the products have passed

CE, CNAS, BV, ISO9001, SGS,
AISC, INTERTEK, NATA, ROUS, IAS,

and other certifications. Preliminary design consulting service, technical guidance service and after-sales tracking service have won the trust of customers. Clearer requirements, so as to achieve more accurate delivery time.



20FT/Expandable Container House



20FT - black - white

Expanded size: L5900*W6540*H2530
 Folded size: L5900*W2200*H2530
 Steel structure: 3mm Hot galvanized steel structure with 4 corner casts
 Wall panel: 50/75/100 mm EPS/Rock wool/ PU sandwich panel
 Wall color: White, Charcoal, grey or customized
 Roof: galvanized steel plate/FRP (glass fiber reinforced plastic)
 Door: Made of steel / aluminum frame, dimension
 Window: Made of steel / aluminum frame, dimension
 Floor: Fireproof panel 18mm PVC grain board
 Bathroom: Premium/ standard or customized
 Floor load: 250 kg/sqm
 Electricity: 3C/CE/CL/SA Standard,with distribution box, lights, switch, sockets, etc.
 Wind resistance: 11 level
 Earthquake resistance: 8 level
 Floor area: 38.4m²



20FT - black - Charcoal

Expanded size: L5900*W6540*H2530
 Folded size: L5900*W2200*H2530
 Steel structure: 3mm Hot galvanized steel structure with 4 corner casts
 Wall panel: 50/75/100 mm EPS/Rock wool/ PU sandwich panel
 Wall color: White, Charcoal, grey or customized
 Roof: galvanized steel plate/FRP (glass fiber reinforced plastic)
 Door: Made of steel / aluminum frame, dimension
 Window: Made of steel / aluminum frame, dimension
 Floor: Fireproof panel 18mm PVC grain board
 Bathroom: Premium/ standard or customized
 Floor load: 250 kg/sqm
 Electricity: 3C/CE/CL/SA Standard,with distribution box, lights, switch, sockets, etc.
 Wind resistance: 11 level
 Earthquake resistance: 8 level
 Floor area: 38.4m²



20FT - black - Gray

Expanded size: L5900*W6540*H2530
 Folded size: L5900*W2200*H2530
 Steel structure: 3mm Hot galvanized steel structure with 4 corner casts
 Wall panel: 50/75/100 mm EPS/Rock wool/ PU sandwich panel
 Wall color: White, Charcoal, grey or customized
 Roof: galvanized steel plate/FRP (glass fiber reinforced plastic)
 Door: Made of steel / aluminum frame, dimension
 Window: Made of steel / aluminum frame, dimension
 Floor: Fireproof panel 18mm PVC grain board
 Bathroom: Premium/ standard or customized
 Floor load: 250 kg/sqm
 Electricity: 3C/CE/CL/SA Standard,with distribution box, lights, switch, sockets, etc.
 Wind resistance: 11 level
 Earthquake resistance: 8 level
 Floor area: 38.4m²



20FT - White - White

Expanded size: L5900*W6540*H2530
 Folded size: L5900*W2200*H2530
 Steel structure: 3mm Hot galvanized steel structure with 4 corner casts
 Wall panel: 50/75/100 mm EPS/Rock wool/ PU sandwich panel
 Wall color: White, Charcoal, grey or customized
 Roof: galvanized steel plate/FRP (glass fiber reinforced plastic)
 Door: Made of steel / aluminum frame, dimension
 Window: Made of steel / aluminum frame, dimension
 Floor: Fireproof panel 18mm PVC grain board
 Bathroom: Premium/ standard or customized
 Floor load: 250 kg/sqm
 Electricity: 3C/CE/CL/SA Standard,with distribution box, lights, switch, sockets, etc.
 Wind resistance: 11 level
 Earthquake resistance: 8 level
 Floor area: 38.4m²



20FT - White - Charcoal

Expanded size: L5900*W6540*H2530
 Folded size: L5900*W2200*H2530
 Steel structure: 3mm Hot galvanized steel structure with 4 corner casts
 Wall panel: 50/75/100 mm EPS/Rock wool/ PU sandwich panel
 Wall color: White, Charcoal, grey or customized
 Roof: galvanized steel plate/FRP (glass fiber reinforced plastic)
 Door: Made of steel / aluminum frame, dimension
 Window: Made of steel / aluminum frame, dimension
 Floor: Fireproof panel 18mm PVC grain board
 Bathroom: Premium/ standard or customized
 Floor load: 250 kg/sqm
 Electricity: 3C/CE/CL/SA Standard,with distribution box, lights, switch, sockets, etc.
 Wind resistance: 11 level
 Earthquake resistance: 8 level
 Floor area: 38.4m²



20FT - Gray - Camouflage

Expanded size: L5900*W6540*H2530
 Folded size: L5900*W2200*H2530
 Steel structure: 3mm Hot galvanized steel structure with 4 corner casts
 Wall panel: 50/75/100 mm EPS/Rock wool/ PU sandwich panel
 Wall color: White, Charcoal, grey or customized
 Roof: galvanized steel plate/FRP (glass fiber reinforced plastic)
 Door: Made of steel / aluminum frame, dimension
 Window: Made of steel / aluminum frame, dimension
 Floor: Fireproof panel 18mm PVC grain board
 Bathroom: Premium/ standard or customized
 Floor load: 250 kg/sqm
 Electricity: 3C/CE/CL/SA Standard,with distribution box, lights, switch, sockets, etc.
 Wind resistance: 11 level
 Earthquake resistance: 8 level
 Floor area: 38.4m²

20FT/Expandable Container House

20FT/Expandable Container House

20FT/Expandable Container House

⑦



20FT cladding-Black-grey

Expanded size: L5900*W6540*H2530
 Folded size: L5900*W2200*H2530
 Steel structure: 3mm Hot galvanized steel structure with 4 corner casts
 Wall panel: 50/75/100 mm EPS/Rock wool/ PU sandwich panel
 Wall color: White, Charcoal, grey or customized
 Roof: galvanized steel plate/FRP (glass fiber reinforced plastic)
 Door: Made of steel / aluminum frame, dimension
 Window: Made of steel / aluminum frame, dimension
 Floor: Fireproof panel 18mm PVC grain board
 Bathroom: Premium/ standard or customized
 Floor load: 250 kg/sqm
 Electricity: 3C/CE/CL/SAA Standard,with distribution box, lights, switch, sockets, etc.
 Wind resistance: 11 level
 Earthquake resistance: 8 level
 Floor area: 38.4m²

⑧



20FT cladding-White-White

Expanded size: L5900*W6540*H2530
 Folded size: L5900*W2200*H2530
 Steel structure: 3mm Hot galvanized steel structure with 4 corner casts
 Wall panel: 50/75/100 mm EPS/Rock wool/ PU sandwich panel
 Wall color: White, Charcoal, grey or customized
 Roof: galvanized steel plate/FRP (glass fiber reinforced plastic)
 Door: Made of steel / aluminum frame, dimension
 Window: Made of steel / aluminum frame, dimension
 Floor: Fireproof panel 18mm PVC grain board
 Bathroom: Premium/ standard or customized
 Floor load: 250 kg/sqm
 Electricity: 3C/CE/CL/SAA Standard,with distribution box, lights, switch, sockets, etc.
 Wind resistance: 11 level
 Earthquake resistance: 8 level
 Floor area: 38.4m²

⑨



20FT cladding-Black-Wood grain

Expanded size: L5900*W6540*H2530
 Folded size: L5900*W2200*H2530
 Steel structure: 3mm Hot galvanized steel structure with 4 corner casts
 Wall panel: 50/75/100 mm EPS/Rock wool/ PU sandwich panel
 Wall color: White, Charcoal, grey or customized
 Roof: galvanized steel plate/FRP (glass fiber reinforced plastic)
 Door: Made of steel / aluminum frame, dimension
 Window: Made of steel / aluminum frame, dimension
 Floor: Fireproof panel 18mm PVC grain board
 Bathroom: Premium/ standard or customized
 Floor load: 250 kg/sqm
 Electricity: 3C/CE/CL/SAA Standard,with distribution box, lights, switch, sockets, etc.
 Wind resistance: 11 level
 Earthquake resistance: 8 level
 Floor area: 38.4m²

⑩



20FT cladding-White-Grey

Expanded size: L5900*W6540*H2530
 Folded size: L5900*W2200*H2530
 Steel structure: 3mm Hot galvanized steel structure with 4 corner casts
 Wall panel: 50/75/100 mm EPS/Rock wool/ PU sandwich panel
 Wall color: White, Charcoal, grey or customized
 Roof: galvanized steel plate/FRP (glass fiber reinforced plastic)
 Door: Made of steel / aluminum frame, dimension
 Window: Made of steel / aluminum frame, dimension
 Floor: Fireproof panel 18mm PVC grain board
 Bathroom: Premium/ standard or customized
 Floor load: 250 kg/sqm
 Electricity: 3C/CE/CL/SAA Standard,with distribution box, lights, switch, sockets, etc.
 Wind resistance: 11 level
 Earthquake resistance: 8 level
 Floor area: 38.4m²

⑪



20FT cladding-White-Sky Blue

Expanded size: L5900*W6540*H2530
 Folded size: L5900*W2200*H2530
 Steel structure: 3mm Hot galvanized steel structure with 4 corner casts
 Wall panel: 50/75/100 mm EPS/Rock wool/ PU sandwich panel
 Wall color: White, Charcoal, grey or customized
 Roof: galvanized steel plate/FRP (glass fiber reinforced plastic)
 Door: Made of steel / aluminum frame, dimension
 Window: Made of steel / aluminum frame, dimension
 Floor: Fireproof panel 18mm PVC grain board
 Bathroom: Premium/ standard or customized
 Floor load: 250 kg/sqm
 Electricity: 3C/CE/CL/SAA Standard,with distribution box, lights, switch, sockets, etc.
 Wind resistance: 11 level
 Earthquake resistance: 8 level
 Floor area: 38.4m²

⑫



20FT cladding-White-Blue

Expanded size: L5900*W6540*H2530
 Folded size: L5900*W2200*H2530
 Steel structure: 3mm Hot galvanized steel structure with 4 corner casts
 Wall panel: 50/75/100 mm EPS/Rock wool/ PU sandwich panel
 Wall color: White, Charcoal, grey or customized
 Roof: galvanized steel plate/FRP (glass fiber reinforced plastic)
 Door: Made of steel / aluminum frame, dimension
 Window: Made of steel / aluminum frame, dimension
 Floor: Fireproof panel 18mm PVC grain board
 Bathroom: Premium/ standard or customized
 Floor load: 250 kg/sqm
 Electricity: 3C/CE/CL/SAA Standard,with distribution box, lights, switch, sockets, etc.
 Wind resistance: 11 level
 Earthquake resistance: 8 level
 Floor area: 38.4m²

20FT/Expandable Container House

20FT/Expandable Container House

13



Trailer house -Black-Yellow

Expanded size: L5900*W6540*H2530
 Folded size: L5900*W2200*H2530
 Steel structure: 3mm Hot galvanized steel structure with 4 corner casts
 Wall panel: 50/75/100 mm EPS/Rock woll/ PU sandwich panel
 Wall color: White, Charcoal, grey or customized
 Roof: galvanized steel plate/FRP (glass fiber reinforced plastic)
 Door: Made of steel / aluminum frame, dimension
 Window: Made of steel /aluminum frame, dimension
 Floor: Fireproof panel 18mm PVC grain board
 Bathroom: Premium/ standard or customized
 Floor load: 250 kg/sqm
 Electricity: 3C/CE/CL/SAA Standard,with distribution box, lights, switch, sockets, etc.
 Wind resistance: 11 level
 Earthquake resistance: 8 level
 Floor area: 38.4m²

14



Trailer house -Black-Gray

Expanded size: L5900*W6540*H2530
 Folded size: L5900*W2200*H2530
 Steel structure: 3mm Hot galvanized steel structure with 4 corner casts
 Wall panel: 50/75/100 mm EPS/Rock woll/ PU sandwich panel
 Wall color: White, Charcoal, grey or customized
 Roof: galvanized steel plate/FRP (glass fiber reinforced plastic)
 Door: Made of steel / aluminum frame, dimension
 Window: Made of steel /aluminum frame, dimension
 Floor: Fireproof panel 18mm PVC grain board
 Bathroom: Premium/ standard or customized
 Floor load: 250 kg/sqm
 Electricity: 3C/CE/CL/SAA Standard,with distribution box, lights, switch, sockets, etc.
 Wind resistance: 11 level
 Earthquake resistance: 8 level
 Floor area: 38.4m²

15



20FT Roof terrace-White

Expanded size: L5900*W6540*H2530
 Folded size: L5900*W2200*H2530
 Steel structure: 3mm Hot galvanized steel structure with 4 corner casts
 Wall panel: 50/75/100 mm EPS/Rock woll/ PU sandwich panel
 Wall color: White, Charcoal, grey or customized
 Roof: galvanized steel plate/FRP (glass fiber reinforced plastic)
 Door: Made of steel / aluminum frame, dimension
 Window: Made of steel /aluminum frame, dimension
 Floor: Fireproof panel 18mm PVC grain board
 Bathroom: Premium/ standard or customized
 Floor load: 250 kg/sqm
 Electricity: 3C/CE/CL/SAA Standard,with distribution box, lights, switch, sockets, etc.
 Wind resistance: 11 level
 Earthquake resistance: 8 level
 Floor area: 38.4m²

16



20FT Roof terrace-Black-White

Expanded size: L5900*W6540*H2530
 Folded size: L5900*W2200*H2530
 Steel structure: 3mm Hot galvanized steel structure with 4 corner casts
 Wall panel: 50/75/100 mm EPS/Rock woll/ PU sandwich panel
 Wall color: White, Charcoal, grey or customized
 Roof: galvanized steel plate/FRP (glass fiber reinforced plastic)
 Door: Made of steel / aluminum frame, dimension
 Window: Made of steel /aluminum frame, dimension
 Floor: Fireproof panel 18mm PVC grain board
 Bathroom: Premium/ standard or customized
 Floor load: 250 kg/sqm
 Electricity: 3C/CE/CL/SAA Standard,with distribution box, lights, switch, sockets, etc.
 Wind resistance: 11 level
 Earthquake resistance: 8 level
 Floor area: 38.4m²

17



20FT Roof staircase-White-Wood grain

Expanded size: L5900*W6540*H2530
 Folded size: L5900*W2200*H2530
 Steel structure: 3mm Hot galvanized steel structure with 4 corner casts
 Wall panel: 50/75/100 mm EPS/Rock woll/ PU sandwich panel
 Wall color: White, Charcoal, grey or customized
 Roof: galvanized steel plate/FRP (glass fiber reinforced plastic)
 Door: Made of steel / aluminum frame, dimension
 Window: Made of steel /aluminum frame, dimension
 Floor: Fireproof panel 18mm PVC grain board
 Bathroom: Premium/ standard or customized
 Floor load: 250 kg/sqm
 Electricity: 3C/CE/CL/SAA Standard,with distribution box, lights, switch, sockets, etc.
 Wind resistance: 11 level
 Earthquake resistance: 8 level
 Floor area: 38.4m²

18



20FT Roof staircase-White

Expanded size: L5900*W6540*H2530
 Folded size: L5900*W2200*H2530
 Steel structure: 3mm Hot galvanized steel structure with 4 corner casts
 Wall panel: 50/75/100 mm EPS/Rock woll/ PU sandwich panel
 Wall color: White, Charcoal, grey or customized
 Roof: galvanized steel plate/FRP (glass fiber reinforced plastic)
 Door: Made of steel / aluminum frame, dimension
 Window: Made of steel /aluminum frame, dimension
 Floor: Fireproof panel 18mm PVC grain board
 Bathroom: Premium/ standard or customized
 Floor load: 250 kg/sqm
 Electricity: 3C/CE/CL/SAA Standard,with distribution box, lights, switch, sockets, etc.
 Wind resistance: 11 level
 Earthquake resistance: 8 level
 Floor area: 38.4m²

30FT/40FT/Expandable Container House

30/40FT Expandable Container House

19



40FT-Black-White

Expanded size:	L11800*W6540*H2530
Folded size:	L11800*W2200*H2530
Steel structure:	3mm Hot galvanized steel structure with 4 corner casts
Wall panel:	50/75/100 mm EPS/Rock woll/ PU sandwich panel
Wall color:	White, Charcoal, grey or customized
Roof:	galvanized steel plate/FRP (glass fiber reinforced plastic)
Door:	Made of steel / aluminum frame, dimension
Window:	Made of steel / aluminum frame, dimension
Floor:	Fireproof panel 18mm PVC grain board
Bathroom:	Premium/ standard or customized
Floor load:	250 kg/sqm
Electricity:	3C/CE/CL /SAA Standard,with distribution box, lights, switch, sockets, etc.
Wind resistance:	11 level
Earthquake resistance:	8 level

20



40FT Custom roof-White-brown

Expanded size:	L11800*W6540*H2530
Folded size:	L11800*W2200*H2530
Steel structure:	3mm Hot galvanized steel structure with 4 corner casts
Wall panel:	50/75/100 mm EPS/Rock woll/ PU sandwich panel
Wall color:	White, Charcoal, grey or customized
Roof:	galvanized steel plate/FRP (glass fiber reinforced plastic)
Door:	Made of steel / aluminum frame, dimension
Window:	Made of steel / aluminum frame, dimension
Floor:	Fireproof panel 18mm PVC grain board
Bathroom:	Premium/ standard or customized
Floor load:	250 kg/sqm
Electricity:	3C/CE/CL /SAA Standard,with distribution box, lights, switch, sockets, etc.
Wind resistance:	11 level
Earthquake resistance:	8 level

21



40FT-Black-Charcoal

Expanded size:	L11800*W6540*H2530
Folded size:	L11800*W2200*H2530
Steel structure:	3mm Hot galvanized steel structure with 4 corner casts
Wall panel:	50/75/100 mm EPS/Rock woll/ PU sandwich panel
Wall color:	White, Charcoal, grey or customized
Roof:	galvanized steel plate/FRP (glass fiber reinforced plastic)
Door:	Made of steel / aluminum frame, dimension
Window:	Made of steel / aluminum frame, dimension
Floor:	Fireproof panel 18mm PVC grain board
Bathroom:	Premium/ standard or customized
Floor load:	250 kg/sqm
Electricity:	3C/CE/CL /SAA Standard,with distribution box, lights, switch, sockets, etc.
Wind resistance:	11 level
Earthquake resistance:	8 level


22



30FT-Black-Gray

Expanded size:	L9000*W6540*H2530
Folded size:	L9000*W2200*H2530
Steel structure:	3mm Hot galvanized steel structure with 4 corner casts
Wall panel:	50/75/100 mm EPS/Rock woll/ PU sandwich panel
Wall color:	White, Charcoal, grey or customized
Roof:	galvanized steel plate/FRP (glass fiber reinforced plastic)
Door:	Made of steel / aluminum frame, dimension
Window:	Made of steel / aluminum frame, dimension
Floor:	Fireproof panel 18mm PVC grain board
Bathroom:	Premium/ standard or customized
Floor load:	250 kg/sqm
Electricity:	3C/CE/CL /SAA Standard,with distribution box, lights, switch, sockets, etc.
Wind resistance:	11 level
Earthquake resistance:	8 level

23



30FT Side door-Black-Gray

Expanded size:	L9000*W6540*H2530
Folded size:	L9000*W2200*H2530
Steel structure:	3mm Hot galvanized steel structure with 4 corner casts
Wall panel:	50/75/100 mm EPS/Rock woll/ PU sandwich panel
Wall color:	White, Charcoal, grey or customized
Roof:	galvanized steel plate/FRP (glass fiber reinforced plastic)
Door:	Made of steel / aluminum frame, dimension
Window:	Made of steel / aluminum frame, dimension
Floor:	Fireproof panel 18mm PVC grain board
Bathroom:	Premium/ standard or customized
Floor load:	250 kg/sqm
Electricity:	3C/CE/CL /SAA Standard,with distribution box, lights, switch, sockets, etc.
Wind resistance:	11 level
Earthquake resistance:	8 level

24



30FT/40FT Custom glass curtain wall-Black-Gray

Expanded size:	L9000*W6540*H2530
Folded size:	L9000*W2200*H2530
Steel structure:	3mm Hot galvanized steel structure with 4 corner casts
Wall panel:	50/75/100 mm EPS/Rock woll/ PU sandwich panel
Wall color:	White, Charcoal, grey or customized
Roof:	galvanized steel plate/FRP (glass fiber reinforced plastic)
Door:	Made of steel / aluminum frame, dimension
Window:	Made of steel / aluminum frame, dimension
Floor:	Fireproof panel 18mm PVC grain board
Bathroom:	Premium/ standard or customized
Floor load:	250 kg/sqm
Electricity:	3C/CE/CL /SAA Standard,with distribution box, lights, switch, sockets, etc.
Wind resistance:	11 level
Earthquake resistance:	8 level

20FT/40FT/Studio

25



20FT/30FT/40FT Glass curtain wall-White

Expanded size: L5900*W6540*H2530
 Folded size: L5900*W2200*H2530
 Steel structure: 3mm Hot galvanized steel structure with 4 corner casts
 Wall panel: 50/75/100 mm EPS/Rock wool/ PU sandwich panel
 Wall color: White, Charcoal, grey or customized
 Roof: galvanized steel plate/FRP (glass fiber reinforced plastic)
 Door: Made of steel / aluminum frame, dimension
 Window: Made of steel / aluminum frame, dimension
 Floor: Fireproof panel 18mm PVC grain board
 Bathroom: Premium/ standard or customized
 Floor load: 250 kg/sqm
 Electricity: 3C/CE/CL/SAA Standard,with distribution box, lights, switch, sockets, etc.
 Wind resistance: 11 level
 Earthquake resistance: 8 level

26



20FT Small double wing folding house

Expanded size: L5900*W4800*H2480
 Folded size: L5900*W7000*H2480
 Steel structure: 3mm Hot galvanized steel structure with 4 corner casts
 Wall panel: 50/75/100 mm EPS/Rock wool/ PU sandwich panel
 Wall color: White, Charcoal, grey or customized
 Roof: galvanized steel plate/FRP (glass fiber reinforced plastic)
 Door: Made of steel / aluminum frame, dimension
 Window: Made of steel / aluminum frame, dimension
 Floor: Fireproof panel 18mm PVC grain board
 Bathroom: Premium/ standard or customized
 Floor load: 250 kg/sqm
 Electricity: 3C/CE/CL/SAA Standard,with distribution box, lights, switch, sockets, etc.
 Wind resistance: 11 level
 Earthquake resistance: 8 level

27



Studio-cladding-Black-grey

Expanded size: L5900*W2200*H2480

Steel structure: 3mm Hot galvanized steel structure with 4 corner casts
 Wall panel: 50/75/100 mm EPS/Rock wool/ PU sandwich panel
 Wall color: White, Charcoal, grey or customized
 Roof: galvanized steel plate/FRP (glass fiber reinforced plastic)
 Door: Made of steel / aluminum frame, dimension
 Window: Made of steel / aluminum frame, dimension
 Floor: Fireproof panel 18mm PVC grain board
 Bathroom: Premium/ standard or customized
 Floor load: 250 kg/sqm
 Electricity: 3C/CE/CL/SAA Standard,with distribution box, lights, switch, sockets, etc.
 Wind resistance: 11 level
 Earthquake resistance: 8 level

28



Studio-cladding-Black-Wood grain

Expanded size: L5900*W2200*H2480

Steel structure: 3mm Hot galvanized steel structure with 4 corner casts
 Wall panel: 50/75/100 mm EPS/Rock wool/ PU sandwich panel
 Wall color: White, Charcoal, grey or customized
 Roof: galvanized steel plate/FRP (glass fiber reinforced plastic)
 Door: Made of steel / aluminum frame, dimension
 Window: Made of steel / aluminum frame, dimension
 Floor: Fireproof panel 18mm PVC grain board
 Bathroom: Premium/ standard or customized
 Floor load: 250 kg/sqm
 Electricity: 3C/CE/CL/SAA Standard,with distribution box, lights, switch, sockets, etc.
 Wind resistance: 11 level
 Earthquake resistance: 8 level

29



Double level expandable folding house

Expanded size: L5900*W6540*H2530
 Folded size: L5900*W2200*H2530
 Steel structure: 3mm Hot galvanized steel structure with 4 corner casts
 Wall panel: 50/75/100 mm EPS/Rock wool/ PU sandwich panel
 Wall color: White, Charcoal, grey or customized
 Roof: galvanized steel plate/FRP (glass fiber reinforced plastic)
 Door: Made of steel / aluminum frame, dimension
 Window: Made of steel / aluminum frame, dimension
 Floor: Fireproof panel 18mm PVC grain board
 Bathroom: Premium/ standard or customized
 Floor load: 250 kg/sqm
 Electricity: 3C/CE/CL/SAA Standard,with distribution box, lights, switch, sockets, etc.
 Wind resistance: 11 level
 Earthquake resistance: 8 level

30



Expandable folding house - large terrace

Expanded size: L5900*W6540*H2530
 Folded size: L5900*W2200*H2530
 Steel structure: 3mm Hot galvanized steel structure with 4 corner casts
 Wall panel: 50/75/100 mm EPS/Rock wool/ PU sandwich panel
 Wall color: White, Charcoal, grey or customized
 Roof: galvanized steel plate/FRP (glass fiber reinforced plastic)
 Door: Made of steel / aluminum frame, dimension
 Window: Made of steel / aluminum frame, dimension
 Floor: Fireproof panel 18mm PVC grain board
 Bathroom: Premium/ standard or customized
 Floor load: 250 kg/sqm
 Electricity: 3C/CE/CL/SAA Standard,with distribution box, lights, switch, sockets, etc.
 Wind resistance: 11 level
 Earthquake resistance: 8 level

20FT/40FT/Studio

Sliding Out

Apple Pod

25



Sliding Out - black - 2.26m H

Option size:	L5900 * W4050 * H2550	Window:	Made of steel / aluminum frame,dimension
Close size:	L5900 * W2260 * H2550	Floor :	Fireproof panel 18mm PVC grain board
Internal height:	2.26m H	Bathroom :	Premium/ standard or customized
Steel structure:	3mm Hot galvanized steel structure with 4 corner casts	Floor load :	250 kg/sqm
Wall panel:	50/75/100 mm EPS / Rock woll / PU sandwich panel	Electricity:	3C/CE/CL/SAA Standard,with distribution box, lights, switch, sockets, etc.
Wall color :	White, Charcoal, grey or customized	Wind resistance :	11 level
Roof:	galvanized steel plate/FRP (glass fiber reinforced plastic)	Earthquake resistance :	8 level
Door:	Made of steel / aluminum frame,dimension		

26



Apple Pod - cladding - 2.26m H

Size:	L5900 * W2260 * H2550	Window:	Made of steel / aluminum frame,dimension
Internal height:	2.26m H	Floor :	Fireproof panel 18mm PVC grain board
Steel structure:	3mm Hot galvanized steel structure with 4 corner casts	Bathroom :	Premium/ standard or customized
Wall panel:	50/75/100 mm EPS / Rock woll / PU sandwich panel	Floor load :	250 kg/sqm
Wall color :	White, Charcoal, grey or customized	Electricity:	3C/CE/CL/SAA Standard,with distribution box, lights, switch, sockets, etc.
Roof:	galvanized steel plate/FRP (glass fiber reinforced plastic)	Wind resistance :	11 level
Door:	Made of steel / aluminum frame,dimension	Earthquake resistance :	8 level

Portable Toilet

29



Single toilet

size:	L1450 * W1130 * H2550
Internal height:	2.26m H
Steel structure:	3mm Hot galvanized steel structure with 4 corner casts
Wall panel:	50/75/100 mm EPS / Rock wool / PU sandwich panel
Wall color :	White, Charcoal, grey or customized
Roof:	galvanized steel plate/ FRP (glass fiber reinforced plastic)
Door:	Made of steel / aluminum frame, dimension
Window:	Made of steel / aluminum frame, dimension
Floor :	Fireproof panel 18mm PVC grain board
Bathroom :	Premium/ standard or customized
Floor load :	250 kg/sqm
Electricity:	3C/CE/CL/SAA Standard, with distribution box, lights, switch, sockets, etc.
Wind resistance :	11 level
Earthquake resistance :	8 level

30



Double toilet

size:	L1450 * W2260 * H2550
Internal height:	2.26m H
Steel structure:	3mm Hot galvanized steel structure with 4 corner casts
Wall panel:	50/75/100 mm EPS / Rock wool / PU sandwich panel
Wall color :	White, Charcoal, grey or customized
Roof:	galvanized steel plate/ FRP (glass fiber reinforced plastic)
Door:	Made of steel / aluminum frame, dimension
Window:	Made of steel / aluminum frame, dimension
Floor :	Fireproof panel 18mm PVC grain board
Bathroom :	Premium/ standard or customized
Floor load :	250 kg/sqm
Electricity:	3C/CE/CL/SAA Standard, with distribution box, lights, switch, sockets, etc.
Wind resistance :	11 level
Earthquake resistance :	8 level

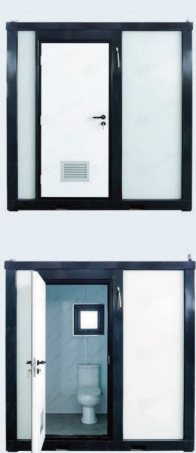
31



Toilet with shower

size:	L1450 * W2260 * H2550
Internal height:	2.26m H
Steel structure:	3mm Hot galvanized steel structure with 4 corner casts
Wall panel:	50/75/100 mm EPS / Rock wool / PU sandwich panel
Wall color :	White, Charcoal, grey or customized
Roof:	galvanized steel plate/ FRP (glass fiber reinforced plastic)
Door:	Made of steel / aluminum frame, dimension
Window:	Made of steel / aluminum frame, dimension
Floor :	Fireproof panel 18mm PVC grain board
Bathroom :	Premium/ standard or customized
Floor load :	250 kg/sqm
Electricity:	3C/CE/CL/SAA Standard, with distribution box, lights, switch, sockets, etc.
Wind resistance :	11 level
Earthquake resistance :	8 level

32



Toilet with shower

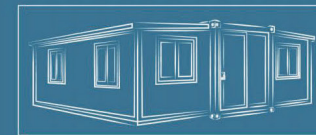
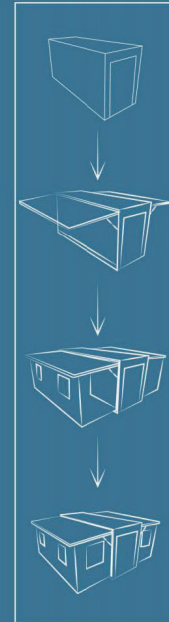
size:	L1450 * W2260 * H2550
Internal height:	2.26m H
Steel structure:	3mm Hot galvanized steel structure with 4 corner casts
Wall panel:	50/75/100 mm EPS / Rock wool / PU sandwich panel
Wall color :	White, Charcoal, grey or customized
Roof:	galvanized steel plate/ FRP (glass fiber reinforced plastic)
Door:	Made of steel / aluminum frame, dimension
Window:	Made of steel / aluminum frame, dimension
Floor :	Fireproof panel 18mm PVC grain board
Bathroom :	Premium/ standard or customized
Floor load :	250 kg/sqm
Electricity:	3C/CE/CL/SAA Standard, with distribution box, lights, switch, sockets, etc.
Wind resistance :	11 level
Earthquake resistance :	8 level

Portable Toilet

20FT



Luxurious atmosphere durable,
integrated molding, seismic,
windproof, waterproof,
four seasons adaptation,
with good anti-corrosion
and rust function.



Our products

Expandable Container House

Expandable container house is an innovative and affordable housing solution, is more eco-friendly than traditional building materials, these container home units are transportable to live temporarily or permanently. The Expandable Container house is unique in that it can be expanded to increase its size as your needs change.



1. Dreams Turned into Reality



From the moment we chose a prefabricated house, we knew it was the right decision. The entire process was smoother and quicker than we had expected.



2. Efficient Delivery, Peaceful Move-in



The prefabricated house was delivered on time, and everything went according to our plan. The installation team was professional and efficient, and in no time, our new home was firmly in place.



3. Smart Design, Flawless Details



The house's structure is very well-designed, with flexible and versatile interior spaces. Both the living areas and functional areas meet all our expectations for comfort.



4. Eco-friendly and Efficient, Time-Saving and Cost-Effective



We not only saved construction time but also reduced costs. Compared to traditional building methods, prefabricated houses are clearly more eco-friendly and efficient.



5. Genuine Buyer Testimonies, Choose with Confidence



Watching the house come together step by step gave us a sense of reliability and solidity. We are very satisfied with the result and highly recommend it to anyone looking for a quick and hassle-free home-building experience.



Expandable Container House

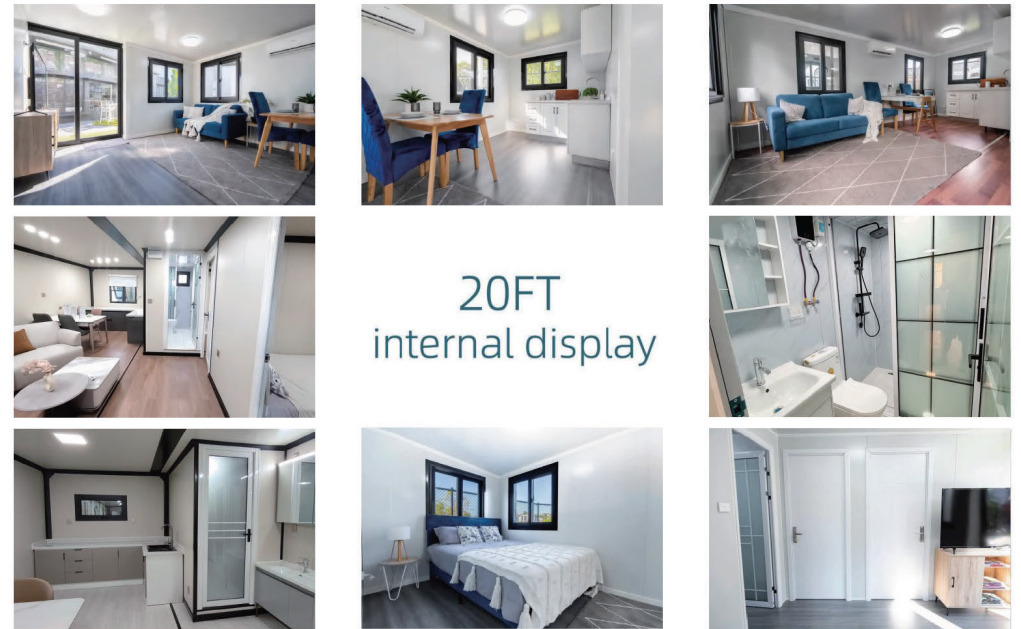
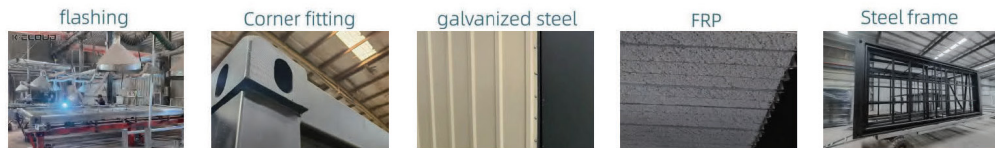
The expandable container house is more and more popular, it has been upgraded with functional accessories.

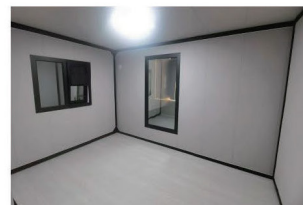
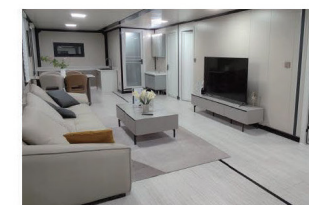
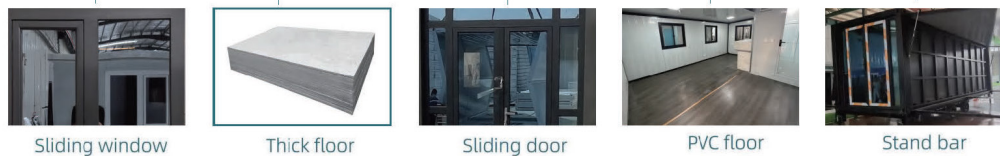


Full range of accessories

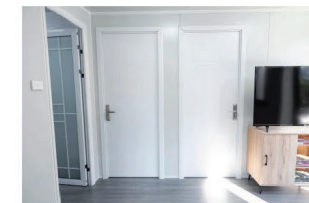
The house is equipped with electric lighting, cabinets, bathrooms, doors and windows, which can be customized to meet different requirements.





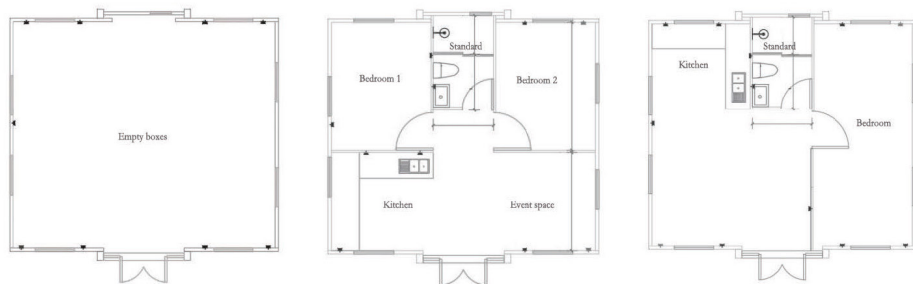


40FT
internal display



Floor Plans(20FT)

The company is very professional in the production of high-end modular container houses, at the same time, we can also custom made modular container house according to the special requirements of customers.

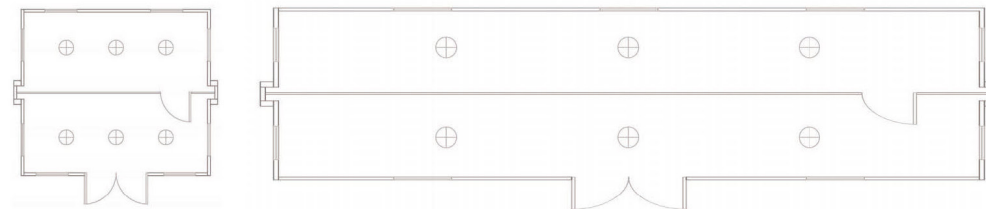


Floor Plans(40FT)

We can professionally make comfortable, safe, environmentally friendly, fast developed new buildings, and provide our customers with integrated services for both design and installation.



Premium studio/Mini Double Wing Folding House



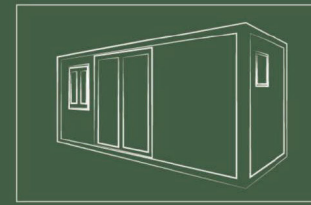
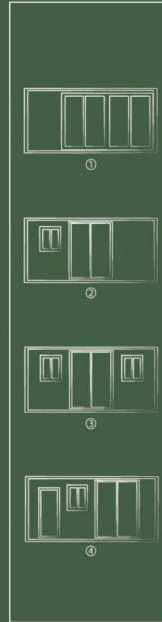
04 Our products
Studio(20FT/40FT)

Luxurious atmosphere durable,
integrated molding, seismic,
windproof, waterproof,
four seasons adaptation,
with good anti-corrosion
anti-rust function.

20FT Studio



04 Our products
Studio(20FT/40FT)



Our products

Studio(20FT/40FT)

This studio is widely used for offices, hotels, dormitories. It comes with an economic floor size, so there is no need for cumbersome installation procedures. Customers can quickly put it into use, so the costs of manpower and building materials are greatly reduced.



Studio(20FT/40FT)



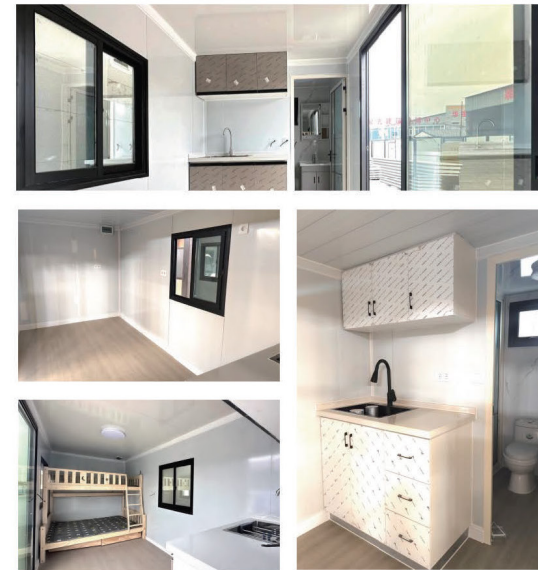
The frame of the studio house is relatively strong, which makes the building look more solid.



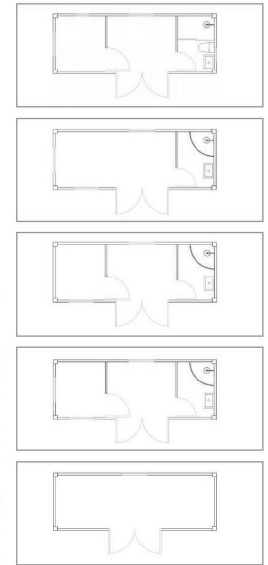
Studio frame

Housing good load-bearing, can be stacked 3 floors, the production of container office with good earthquake resistance, and high stability.

Beautiful appearance. The frame of the studio house is relatively strong, which makes the building look more solid.



Studio(20FT/40FT)
internal display





Container housing combination

This kind of building is set up with a combination of multiple container houses. Dazzlingly fashionable building will be built in a very short period of time.

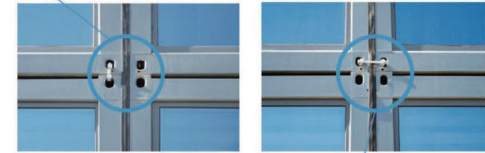


X1












X4


















Container housing junction




















Production details

20FT Product picture					
20FT Basic size	Expansion size Internal dimension	L 990mm*W 6520mm*H 2530mm L 5130mm*W 6360mm*H 2320mm	Folding size L 990mm*W 2200mm*H 2530mm		
40FT Product picture					
40FT Basic size	Expansion size Internal dimension	L 11800mm*W 6420mm*H 2520mm L 11205mm*W 6270mm*H 2260mm	Folding size L 11800mm*W 2260mm*H 2520mm		
	 photos only for reference				
Main steel configuration	Name	Specifications	Thickness mm	material type	picture
	Hoisting Castings	40FT 160*160*110mm 20FT 160*160*110mm		cast	
	Unfold bottom purlin	Galvanized square pipe 40*60*1.8mm	1.8mm	Q235A	
	Body frame	Galvanized square pipe 100*150*3.0mm 150*150*3.0mm 100*80mm	3.0mm		
	Expansion top frame	Profiled steel	1.8mm	Q235ste	
Floor material	Floor	Inorganic fireproof material			
	Floor leather	PVC			

Door and window configuration	Sliding doors	2270*1930mm		
	Swing doors	2075*800mm		
	Interior door	2050*800mm		
	Bathroom door	2050*730mm		
	window		W1125*H1100 1w950*1100 70 plastic steel single glass push-pull guardrail window, 3mm glass	
		500*200mm 200*600mm 70 plastic steel single glass push-pull guardrail window, 3mm glass		
Floor material	Main power cord	6mm ² Australian standard soft copper wire		
	air conditioning wire	4mm ² Australian standard soft copper wire		
	Lighting line	1.5mm ² Australian standard soft copper wire		
	Socket cable	2.5mm ² Australian standard soft copper wire		
	Light	LED lamp	24W	
	socket	Australian standard 6 holes	10A	
	socket	Australian standard 3-, 6 holes	10A	
	switch	Circuit breaker		
	distribution box			

Cabinet configuration	cupboard		
	mesa		
	Water basin		
	drainpipe		
	tap		
Bathroom configuration	Water supply pipes		
	Basin pipes		
	cabinet		
	drainpipe		
	faucet		
	Shower room		
	toilet		
	shower		
	Stainless steel explosion proof pipe		
	Stainless steel towel holder		
Exterior wall structure	EPS exterior wall panel top plate material	75mm, 50mm EPS steel plate	
	Outer top plate	Galvanized flat steel sheet	

Auxiliary material	seam strip	PVC	per pcs	
	15A, 32A Industrial plug	20FT use 15A 40FT use 32A	3 points 15A, 32A Triple core 3-wire	
	M24 support-leg		M24	
	PVC glue	glue		
	water-stop	polytetrafluoroethylene		
	Plastic cap		φ19	
	50mm water pipe plug		φ50	
	glass glue		hard	
	gun of glass glue			
	D-type strip		For seaming gap white	
	Water-proof strip		100#	
	Drill		φ4.2	
	inner hexagon spanner		φ10	
	cross screw head			
	screw		φ50	
big cap drill tail screw		φ38		
rivet		φ4.2		

04 Our products
Apple Pod

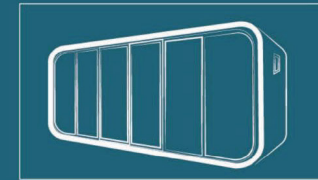
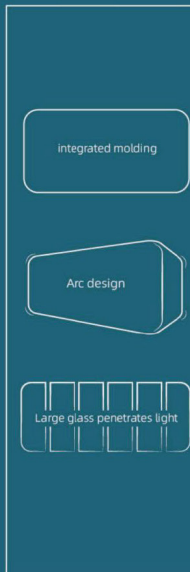
Luxurious atmosphere durable,
integrated molding, seismic,
windproof, waterproof,
four seasons adaptation,
with good anti-corrosion
anti-rust function.



Apple Pod



04 Our products
Apple Pod



Our products

Tiny Ipod with the comfort of Home

The Apple Pod house comes with unique design and strong structure, integrated molding, curve design and large glass curtains. It is easy and fast to ship, assemble and disassemble when needed, regardless of geographical limits.



Apple pod



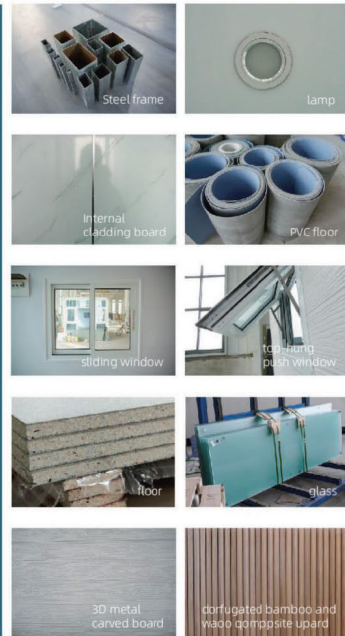
front



side1



side2



Apple pod internal display



Apple pod specification

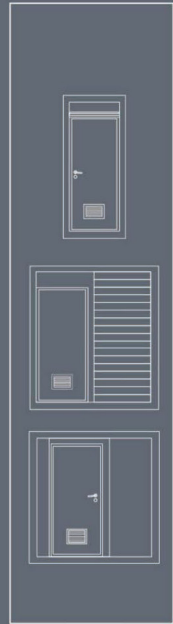
Product type	Exterior dimensions	Interior collocation
3m Pod House 870kg/set Could Load 4 sets/40HC	Size L 2.93m * W 2.24m * H2.36m	AU Standard Cabinets + Side push out window+Top spotlight
4m Pod House Type-A 1100kg/set Could Load 3 sets/40HC	Size L3.93m* W2.24m* H2.36m	AU Standard Washroom with shower +Side push out window+ bedside cupboard+ Top spotlight+Bed+Basin
4m Pod House Type-A 1100kg/set Could Load 3 sets/40HC	Size L3.93m* W2.24m* H2.36m	AU Standard Washroom with shower +Side push out window+ bedside cupboard+ Top spotlight+Bed+Basin

Product type	Exterior dimensions	Interior collocation
5m Pod House Type-A 1100kg/set Could Load 2 sets/40HC	Size: L4.95m* W2.24m* H2.36m	AU Standard Cabinets + Side push out window+Top spotlight
5m Pod House Type-B 1100kg/set Could Load 2 sets/40HC	Size: L4.95m* W2.24m* H2.36m	AU Standard Washroom with shower +Side push out window+ bedside cupboard+ Top spotlight+Bed+Basin
6m Pod House Type-A 2070kg/set Could Load 2 sets/40HC	Size: L5.93m*W2.24m*H2.37m	Australia Standard Washroom with shower+Back push out window+ bedside cupboard+Top spotlight+Bed
6m Pod House Type-B 2070kg/set Could Load 2 sets/40HC	Size: L5.93m*W2.24m*H2.37m	Australia Standard Washroom with shower+Back push out window+ Top spotlight+Basin+ Sofa



Luxurious atmosphere durable integrated molding, seismic windproof, waterproof, four seasons adaptation, with good anti-corrosion, and rust function.

Portable toilets



Our products

Portable toilets

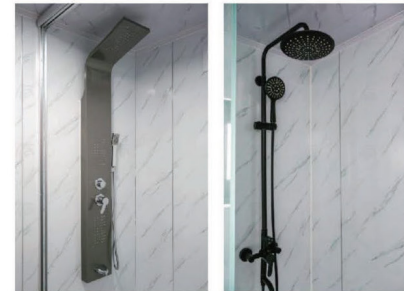
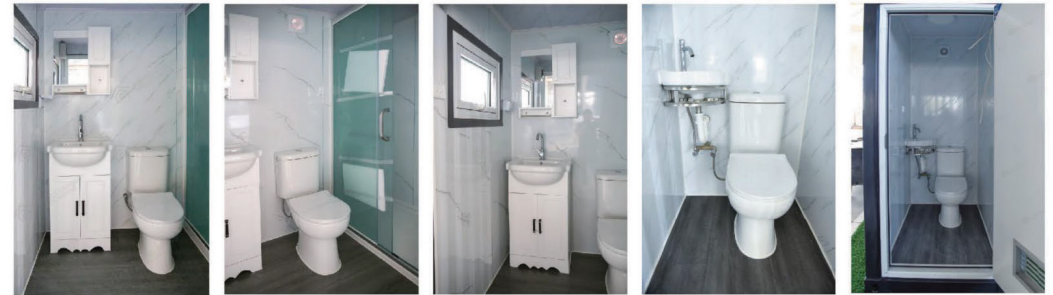
This portable single toilet is widely used in daily life - offices, hotels, dormitories, etc. It comes with a small size, so there is no need for cumbersome installation procedures. Our customers can quickly put it into use, thus the costs of manpower and building materials are greatly reduced.





Advantages of portable toilet

1. Strong mobility, so as to avoid the waste of resources caused by house demolition.
2. Various treatment methods can be adopted according to the limitation of the environment.
3. It covers a small area. Compared with the traditional toilet, the portable toilet greatly saves the land area, which just caters to the current land tension situation.
4. It is beautiful and generous. On the basis of ensuring practicality, it pays attention to the importance of beauty and becomes a scenic line of tourist attractions and park districts.






Portable toilets internal display

Many options for portable toilets, with one or two closets, bathroom + flush toilet, we also have models for the disabled, custom design is available.



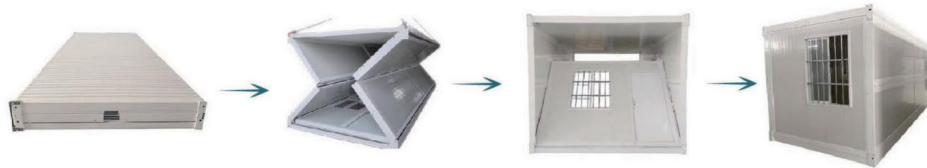
Portable toilets

products	size	Project description	weight
	products 1 L2260*W1450*H2300 Customizable	With 1 toilet, 1 basin and 1 shower inside	750kg
	products 2 L2260*W1450*H2300 Customizable	With 1 toilet, 1 basin and 1 shower inside	750kg
	products 3 L2260*W1450*H2300 Customizable	Separate toilet With 1 toilet, 1 basin	750kg

picture	Name	Properties materials	Thickness mm	Specifications
	Hoisting Corner pieces	cast steel		
	Body frame	Galvanized square pipe	3.0mm	
	Floor	Glass magnesium fireproof floor	18mm	Inorganic fireproof materials
	Floor leather	pvc	2mm	
	Door	EPS+ steel plate	75mm\50mm	W840*H2110
	window	Broken bridge aluminum		W700*H500
	Shower	stainless steel		
	faucet	stainless steel		

	cabinet			
	cabinet	ceramics		
	Toilet paper boxes	ABS		
	Standard shower room			
	Toilet brush	Aluminum alloy		900*900mm
	socket		European standard 3 holes	
	switch		Circuit breaker	
	Exhaust fan			

Our products — Folding container house



Container folding

Basic size	Expansion size		Folding size	
	Length 5900mm* Width 2480mm* height 2540mm	Internal dimension	Length 5900mm * width 2480mm*height 340 (-5~7)mm	
Nnme	Specifications	Thickness/mm	Properties/materials	picture
Bottom frame secondary purlin	Galvanized square pipe 40*40*5.9m	1.3	Q235	
Bottom purlin	Galvanized square pipe 40*40*2.36m	1.3	Q235	
Bottom stringer	Galvanized square pipe 60*140*5.9m	1.5	Q235	
Side fan main beam 2	Shaped P tube 40*55*5.9m	1.3	Q235	
Floor	2810*1180	15	Glass magnesium fireproof floor	

Our products — Flat packing container house



Standard house	size	6055mm*2990mm*2896mm		
Index	Insulation	0.043W/m·K	Wind resistance	0.50kN/ m ²
	sound insulation	≥ 30dB	Fire proof performance	level A
	waterproof	level 2	Seismic	level 8
	Ground live load	2.0kN/ m ²	performance	0.5kN/ m ²
Main structure	main section bar	The thickness of galvanized ground frame beam is 2.3mm; The thickness of galvanized roof frame beam is 2.3mm; The thickness of galvanized column is 2.3mm; Zinc content: 80g.		
	Structural connection	M12 * 40 high strength bolt		
	Spraying process	Galvanized process, polyester finish		

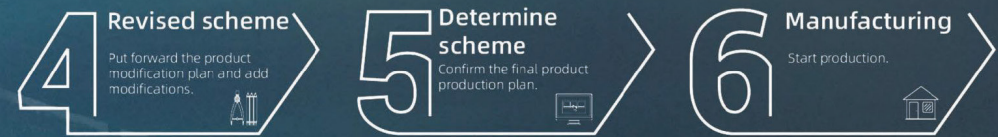


Ground system	Bottom panel	910 type white corrugated board, 0.3mm thick
	Thermal insulation material	Glass wool roll felt, thickness 100mm, volume weight 14kg / M ³ The combustion performance is grade A non combustible
	Damp proof course	PE resin film
	Structural plate	Cement fiber board, 18mm thick
	Flooring	PVC environment-friendly plastic floor, 2.0mm thick, blue
door	Entrance doors	Steel door, size ≥ w845 * h2035, stainless steel door lock
window	Outer window	Size: w1120 * H1100 (two sides) Double glass (4 + 9 + 4) insulation glass with anti-theft net and screen window
decoration	Interior decorative corner	Color steel profiled corner piece, thickness 0.5mm, color Xinyu white





Product processing customized process






DR. EISSING & SOHN

HANDEL & SPEDITION KG

 +49 160 636 2588

 Erdbeerfeld 20, 26899 Rhede (EMS)

 www.eissing-sohn.de

 info@eissing-sohn.de

Für Anfragen zu Angeboten, Preisen und allen weiteren Anliegen:

 simon_uwe@eissing-sohn.de

